

# Chemical pollutant: Global PICTURE

THERE ARE AN ESTIMATED  
**350,000**  
REGISTERED CHEMICALS

WITH  
**3** NEW POTENTIAL TOXINS A DAY

**7** MILLION PREMATURE DEATHS LINKED TO AIR POLLUTION

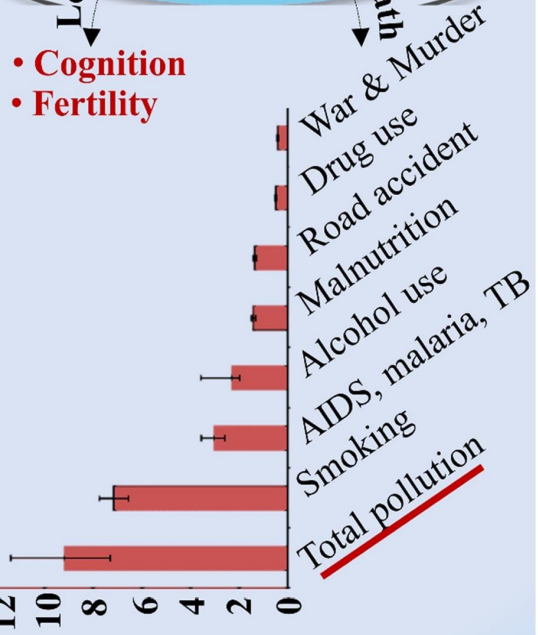
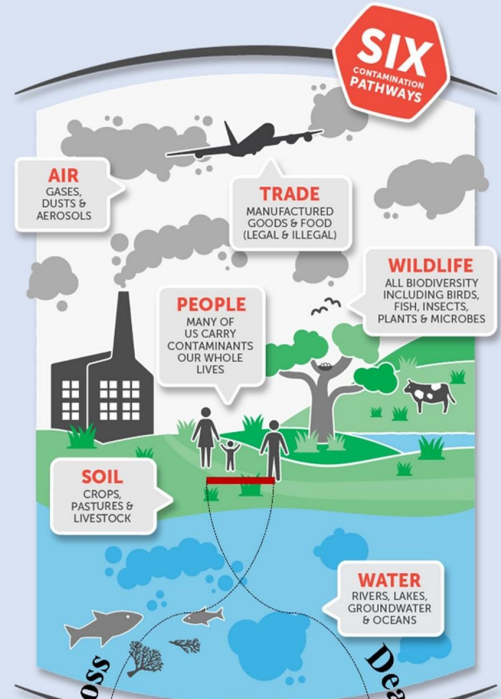
ALMOST A FIFTH OF CHINA'S SOIL IS CONTAMINATED

OVER **5** TRILLION PIECES OF PLASTIC DEBRIS FOUND IN THE OCEAN

WE PRODUCE & DISPOSE OF **400** MILLION TONNES HAZARDOUS WASTE EVERY YEAR

LESS THAN **1%** OF THE WORLD'S 5 MILLION POTENTIALLY CONTAMINATED SITES HAVE BEEN PROPERLY ASSESSED OR REMEDIATED

THAT'S THIS MUCH!



THREAT		VULNERABILITY		RISK
<b>Environmental Exposures</b> Diesel emissions Ozone concentration PM2.5 concentration Populations near heavy traffic roadways Toxic releases from facilities	<b>Environmental Effects</b> Lead risk from housing Proximity to hazardous waste treatment, storage, and disposal facilities Proximity to Superfund sites Proximity to risk management plan facilities Wastewater discharge	<b>Socioeconomic Factors</b> Limited English No high school diploma People of color Population living in poverty Transportation expense Unaffordable housing Unemployment	<b>Sensitive Populations</b> Populations with high death rates from cardiovascular disease Populations with high percentages of low birth weight	<b>Environmental Health Disparities</b> Communities experiencing a disproportionate share of environmental health burdens that will need more assistance to reach equitable outcomes

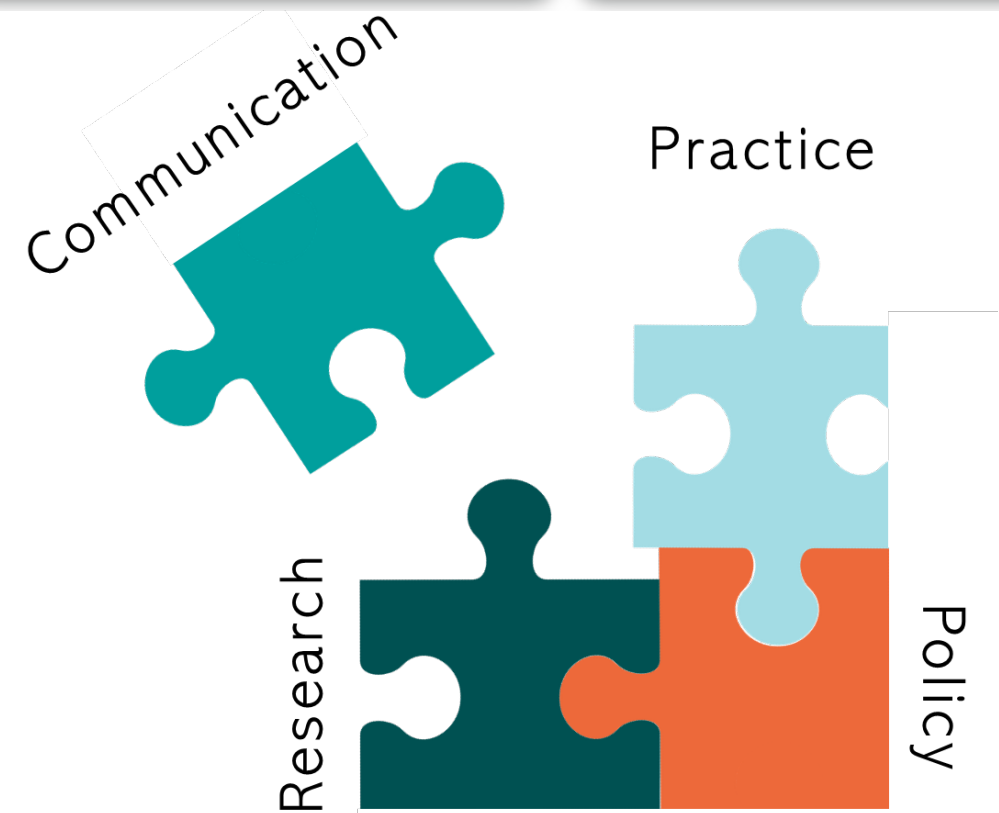


Image References:  
Naidu et al, 2021 DOI:  
[10.1016/j.envint.2021.106616](https://doi.org/10.1016/j.envint.2021.106616)



## Michelle Gin, MPH

Environmental Health Supervisor -  
Community Outreach and  
Engagement

Ramsey County Public Health

Dept

**Interests:** Health communicator with interest in toxic chemicals in consumer products and redesigning systems to educate and change behaviors



## Theresa Guillette, PhD

Environmental Scientist  
Arcadis, U.S.

**Interests:** Research on PFAS fate and transport in groundwater, ecological risk assessment, and developing PFAS remediation solutions for AFFF impacted sites



## Annie Hoang, MPH

MD Candidate  
University of California, San  
Francisco (UCSF)

**Interests:** Research, policy, and advocacy work on methylene chloride deaths in the workplace

